

Tackling Economic Inactivity to Improve Health Outcomes and Reduce Inequality

Philippa Norris, 2024-25 Fellow

GM has 23.4% economically inactive residents, compared to 21.2% national average.

Within the 10 localities of GM, Manchester has the highest proportion of economically inactive residents.

Estimated 102,600 people, aged 16-64 in GM have work-limiting mental health or MSK needs

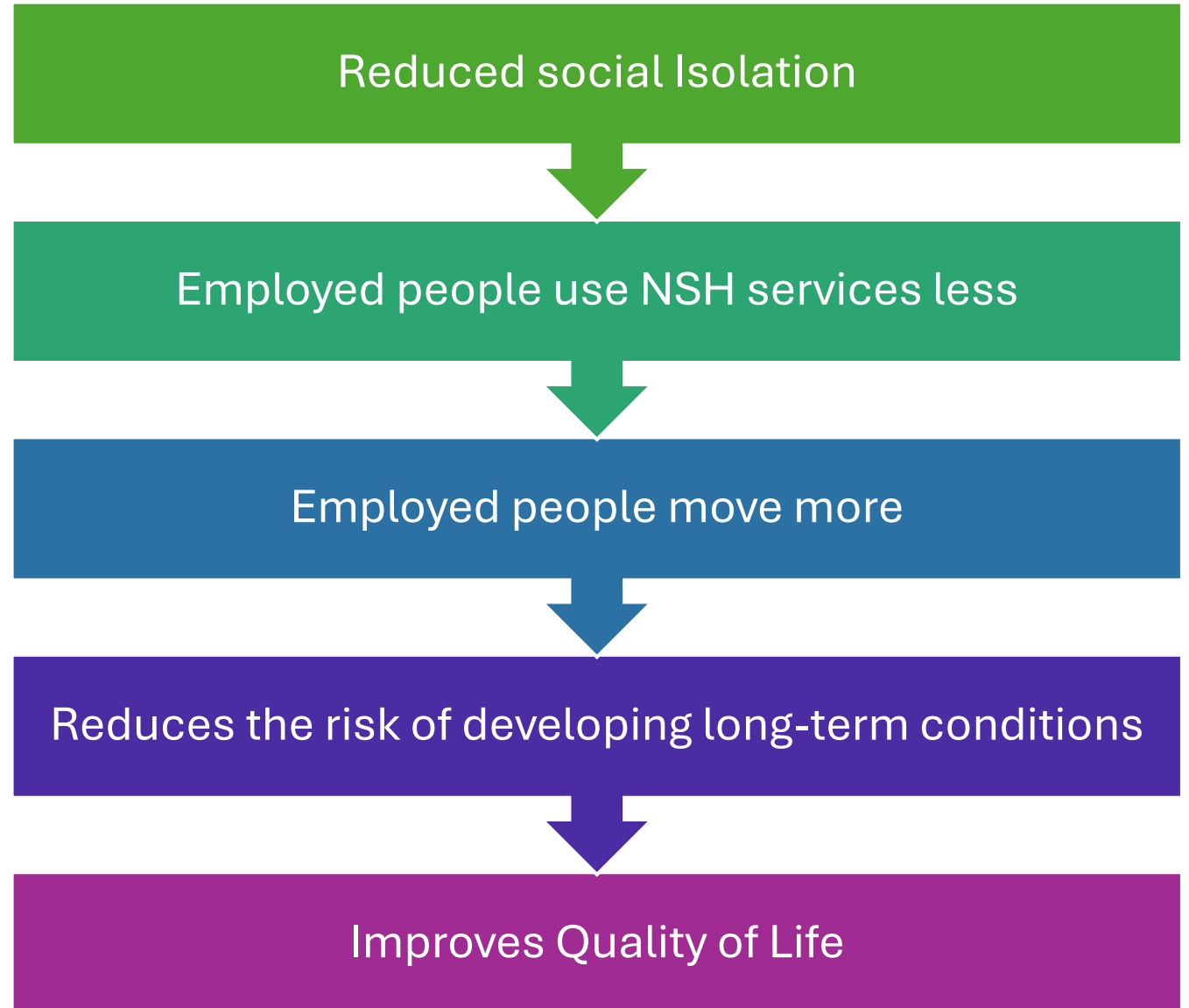
10,000 residents are inactive due to temporary sickness.

WORKING WELL

DOING THINGS DIFFERENTLY
FOR GREATER MANCHESTER

- It is well known, that once a person is out of work for 6 months, the chances of them returning to employment significantly reduces.
- GM ICP mission 'help people get into, and stay in good work'

Work is an important social determinant of health for individuals, their families and communities (Gov, 2024)



Project Aim;

Improving health outcomes and quality of life for patients who are registered with Tregenna Medical Practice, in Wythenshawe, who are off sick, at risk of falling out of work, or economically inactive.



ENCOURAGE PATIENT ENGAGEMENT IN MANAGING THEIR OWN HEALTH AND EMPLOYMENT STATUS.



PROACTIVELY ADDRESS HEALTH CONDITIONS WHICH ARE AFFECTING PATIENTS' ABILITY TO STAY IN WORK.



FACILITATE GP'S ENGAGEMENT TO TACKLE ECONOMIC INACTIVITY.



IMPROVE STRATEGIES TO IDENTIFY PATIENTS AT RISK OF FALLING OUT OF WORK.

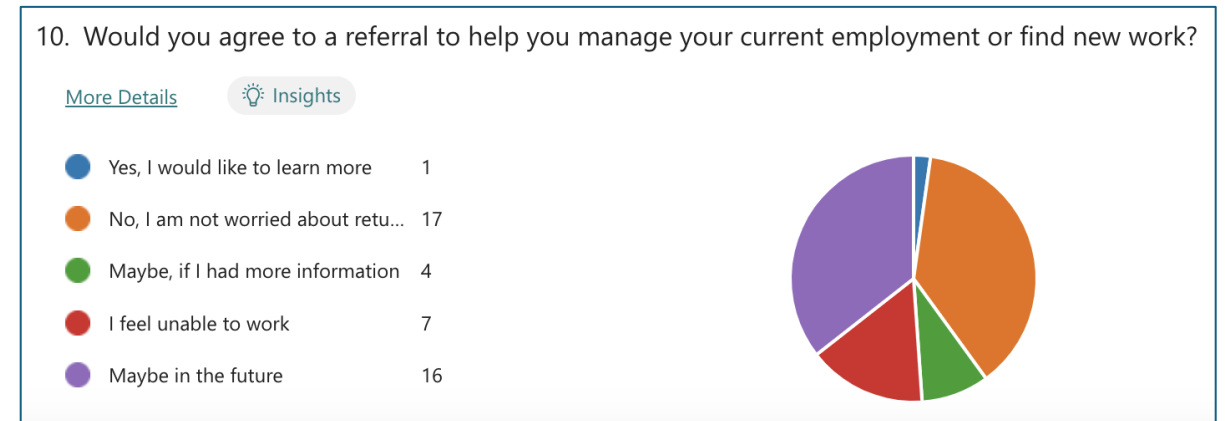
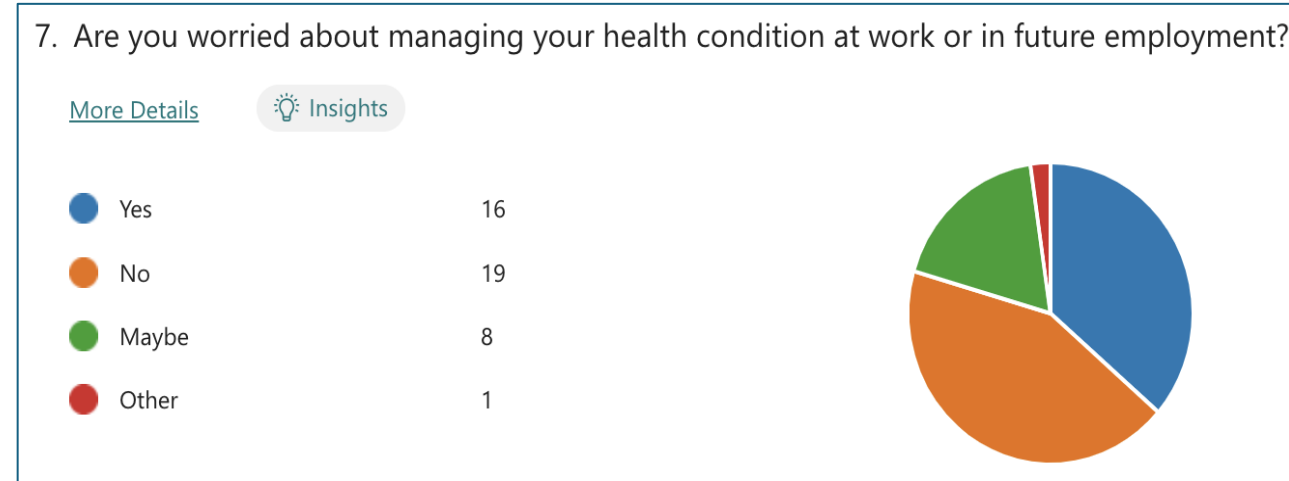
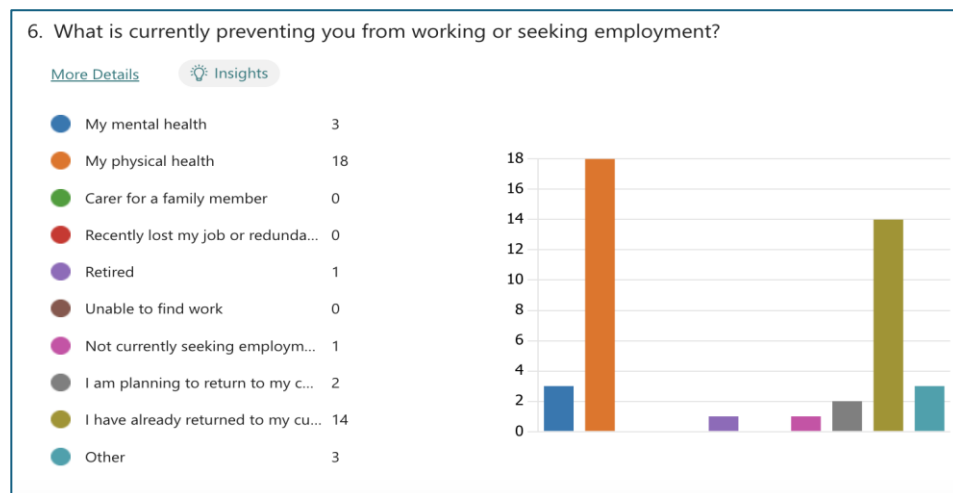
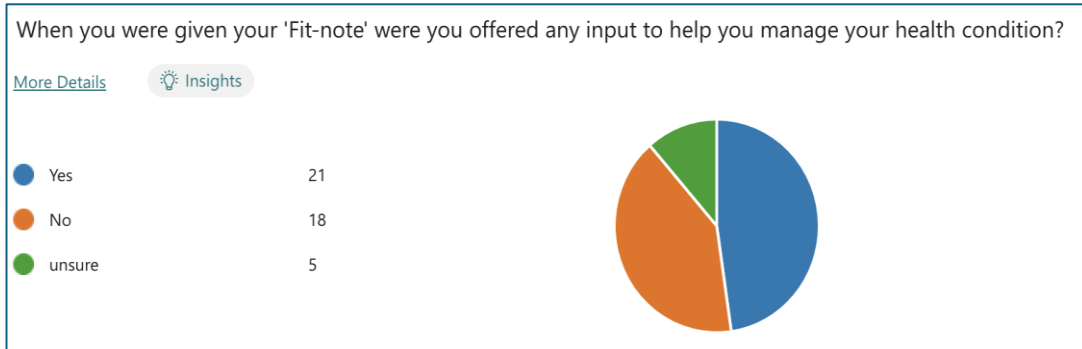
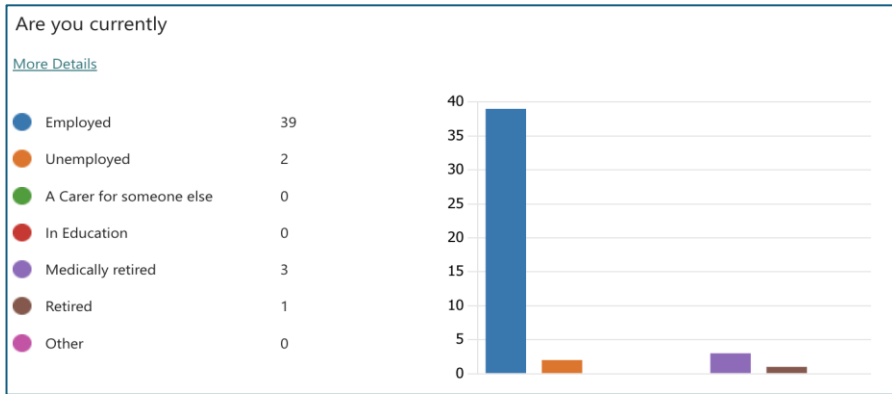


IMPLEMENT INTERVENTIONS TO ENABLE PATIENTS TO FEEL SUPPORTED IN RETURNING TO THEIR CURRENT EMPLOYMENT.



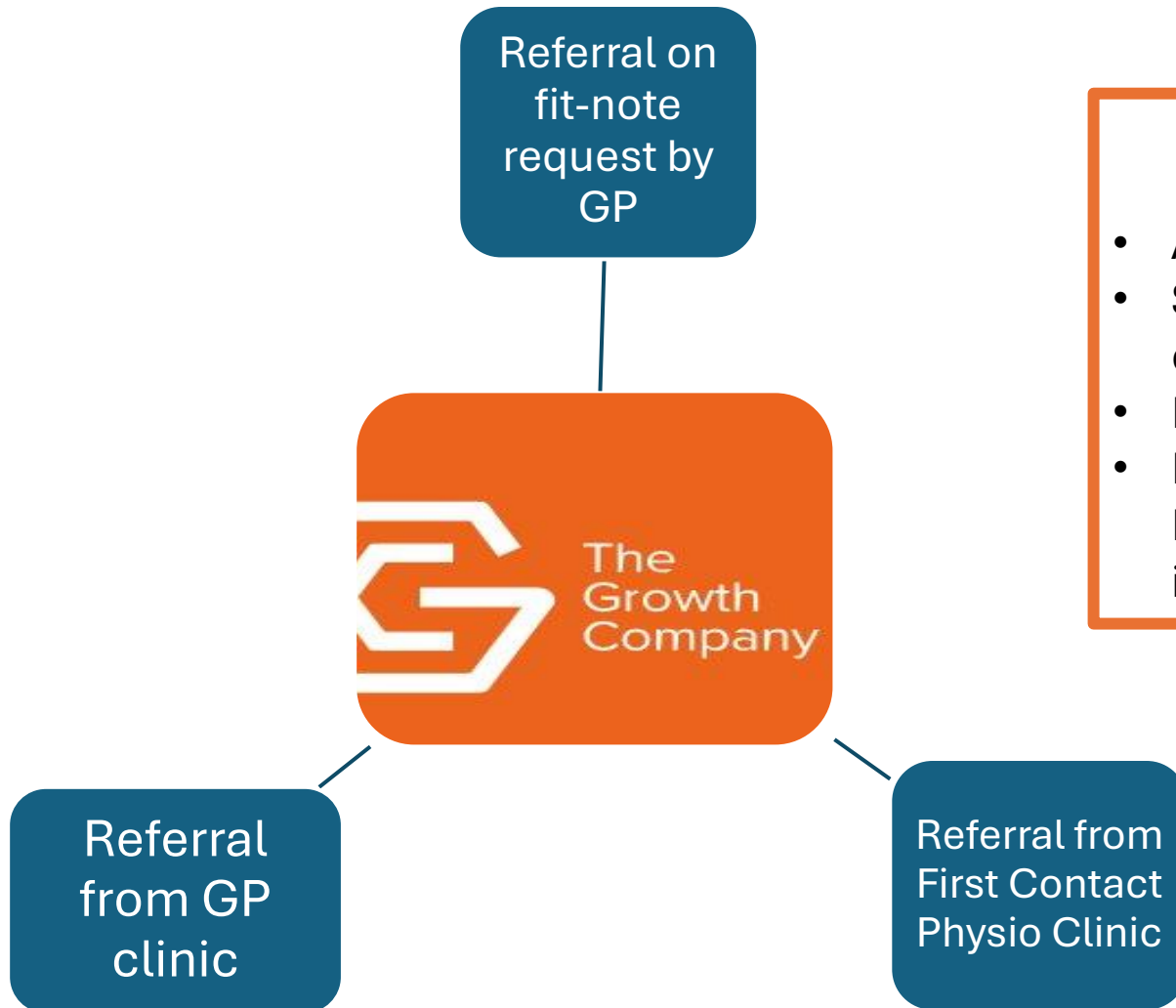
EASY REFERRAL INTO SERVICES THAT CAN DIRECT PATIENTS TO GOOD EMPLOYMENT, TRAINING, AND EDUCATION.

A 10 question Microsoft forms questionnaire was text to all patient who received a Med-3 (fit-note in April and May 2024. Response rate; 46



- **86% employed**
- **50% were offered input on requesting a fit-note**
- **58% of those still off work, had a Physical health condition.**
- **53% were worried about managing health in work**
- **46% may agreed to a Work-Well referral**

Embedded Pathway from Primary Care into a Work-Well Service



The Growth Company

- A non-profit social enterprise.
- Support people with health conditions and disability into employment to improve lives.
- Prevent people falling out of work.
- Forms part of cities new action plan Making Manchester Fairer (MMF), to tackle preventable gaps in health inequalities.

Referral rates so far	GP/FCP
June	2
July	6
August	1